



VERMONT YOUTH CONSERVATION CORPS



FROM OUR EXECUTIVE DIRECTOR



Every person has leadership potential. But... How does one learn to lead? Are leadership abilities innate or can they be taught? When is the best time to entrust young adults with leadership positions? And, what role does failure play in shaping the character of future leaders?

At VYCC, we teach leadership through experiential learning. We believe there is no “wrong” time to help young adults emerge as leaders. Rather, the greater risk is in failing to offer young people opportunities to serve and to make a tangible difference.

The stories in this report feature the unique relationship between Crew Leaders and Corps Members. It’s a wonderful dance where Corps Members are entrusted with increasing amounts of responsibility. Our role is to nurture leadership potential in an environment where everyone’s contributions matter. That it is outdoors, challenging, and fun makes the learning that much more indelible!

In this light, the intense and immersive model of a VYCC crew is a reflection of – and preparation for – our adult lives. A world where individual actions affect something greater than ourselves: the health of the environment and the strength of our communities.

In just a few weeks, Corps Members and Crew Leaders will be hard at work on the trail, in the forests, in the fields, and in a growing number of Vermont communities. By the close of the season, the change in them will be visible and profound. They will be leaders.

Thank you for your continued support and I look forward to hearing from you.

A handwritten signature in black ink that reads "Breck Knauff". The signature is stylized and includes a long horizontal line extending to the right.

Breck Knauff,
Executive Director

FROM OUR BOARD CHAIR

BOARD MEMBERS

Jim Feinson,
Chair

Kris Brines,
Vice Chair

Matt Fargo,
Secretary

Linda McGinnis,
Immediate Past Chair

George Russell

Michael Snyder,
Ex Officio

Scott Weaver

Joe Fusco



2015 was a year of remarkable transition for VYCC. We celebrated 30 years of the organization's – and our alumni's – accomplishments. VYCC's track record of success is remarkable - alumni still reflect on their often life changing VYCC experience.

A dedicated staff and board updated VYCC's mission statement and identified four strategic priorities: enroll more Corps Members, deepen learning outcomes, broaden our definition of conservation and increase our conservation impact, and strengthen internal operations.

Thomas Hark, our Founding President, handed the reins to new leaders, both on staff and among the Board. We are forever grateful for Thomas' dedication, vision, and tenacity. Tom has been the heart and soul of VYCC, and made it possible for a talented management team to propel VYCC toward continued growth, innovation, and deeply impactful programming.

While the world may seem more "connected" every day, in many ways our young adults are more disconnected. This makes the mission of VYCC more relevant and important than ever. Thank you for your support in 2015.

A handwritten signature in black ink that reads "Jim Feinson". The signature is written in a cursive, flowing style.

Jim Feinson,
Board Chair

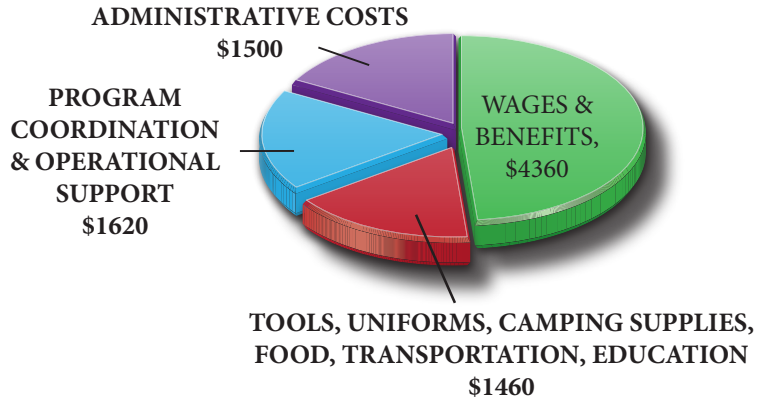
As we explore the experiences of young leaders in this report, you'll notice how helmets distinguish Crew Leaders (blue) from Corps Members (green).



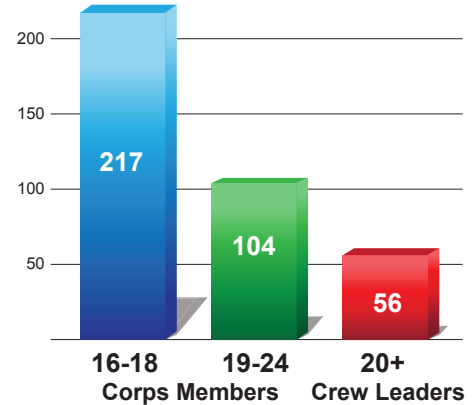
BY THE NUMBERS

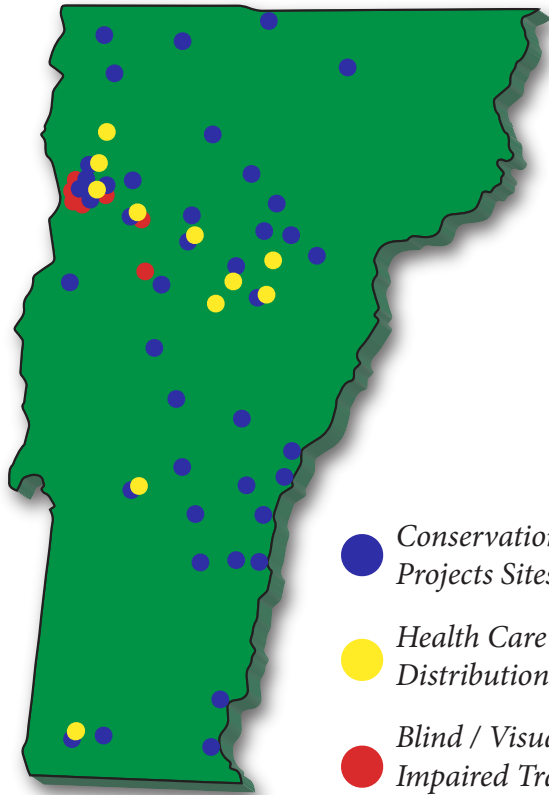
In 2015, VYCC served **377** youth and young adults. Of these, **209** participated in our Conservation Program, and **97** in our Farm Program. **158** young women and **219** young men participated in these programs. Altogether, Farm and Conservation Crews worked over **78,000** hours.

For a residential summer crew in our Conservation Program, the weekly cost for six Corps Members and two Crew Leaders is approximately \$9,000.



PARTICIPANT AGE BREAKDOWN





-  *Conservation Projects Sites*
-  *Health Care Share Distribution Sites*
-  *Blind / Visually Impaired Training Sites*

VYCC Conservation crews completed **38** miles of new or improved trails, stabilized **10** miles of river-banks, improved **5.5** miles of class IV roads, and built **400** new drainage structures, **28** new staircases, and **8** new bridges.

VYCC's Farm Program distributed **90,800** pounds of fresh locally grown produce and farm raised poultry to nearly **1,600** food insecure Vermonters.

VYCC's Blind/Visually Impaired Program employed **34** youth and young adults at **2** café and **8** internship sites.

Leaders Teach

2015 was Caroline's third season with VYCC, and her first as a Crew Leader. Originally from Mendon, she graduated from Notre Dame this spring and is pursuing a Master of Education.

“VYCC is about education at its core, so I saw it as a good precursor to my master's program. VYCC helped me develop a philosophy of teaching: helping people unmask their potential; allowing them to do things they wouldn't have seen possible before.”

“I believe the best teachers are open to learning from their students. To develop as a teacher is to be open to learning from others. I learned about my Corps Members' lives, interests, and who they want to be. Through that process we developed trust, and through that trust they were willing to learn from me and follow my direction. It was mutual learning.”

One of Caroline's Crew Members was Matt: native of Richmond, student at



Caroline leads a Crew digging runoff channels along a low lying section of road along the East Elmore Branch of the Lamoille River

Photo Credit: Amy Kolb Noyes / Vermont Public Radio

Lyndon State College, and part-time tutor. He shares, “I’m new to tutoring and I’m learning that it’s less about doing work for people and more about teaching people how to do the work themselves. That relates to Crew Leaders: they asked questions of us and made it a conversation that led to creative ideas.”

Matt summarizes his experience as a combination of work, education, and personal growth: “This was a scenario of people working really hard towards a common goal. We all participated to our fullest ability, and had a lot of great conversations – the WoRD discussions each day led to a lot of great philosophical debates which made the day go faster. I learned about patience and seeing the views of other people.”

Matt’s tentmate, Tylar, is from Barre. He shares, “You get to meet a lot of different people you never thought you would. Crew mates helped me open my eyes to new things. My tentmate is very smart. He is in college and I haven’t begun college yet. One thing we have in common is a love for the outdoors.”

In addition to developing as a teacher, Caroline and her co-leader “both developed into successful leaders by learning from each other. He wanted to work on trusting others to take charge on projects. I’m not one to command a room. Throughout the summer I took the reins and Thomas would give me critiques. I developed into a leader that I didn’t think I could be, and Thomas learned to trust me and let me lead.”



Matt (left) and a crewmate

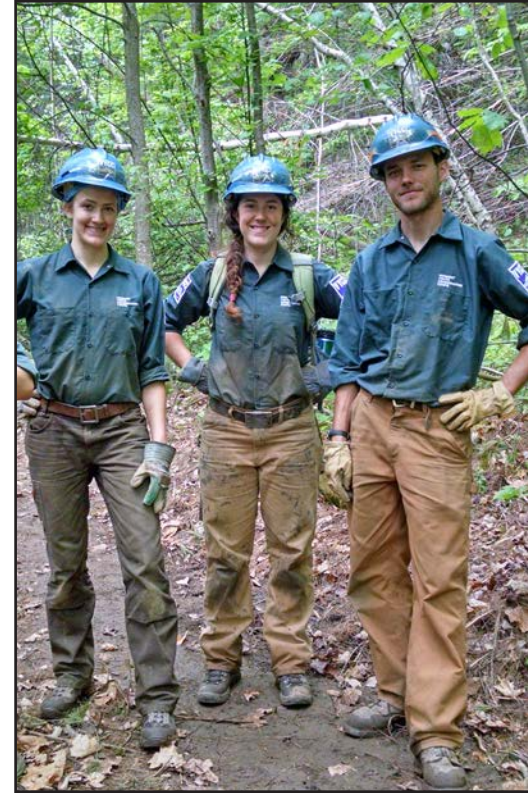
Leaders Support The Team

Amanda, a seasoned VYCC Crew Leader from Canaan, helped implement VYCC's new partnership with Department of Vocational Rehabilitation. This young partnership continues and strengthens VYCC's long tradition of bringing young adults from very diverse backgrounds together, creating a setting of rich personal and group growth.

“We would talk with people every day who would stop to thank us. Corps Members had a chance to engage with and feel valued by their community.” WCAX interviewed the crew about the 100 year anniversary of town forests. Amanda shares that it gave the crew a sense of pride that they were doing something important enough to be on the news.

“This was their first job. Everyone was starting from the same place. That was the contributing factor to being able to let go of preconceptions. One Corps Member said, ‘I had no idea this person was so cool. I never would have talked to this person in school, but I realize they are going through a lot of the same things I am.’ I could see the support system growing as the season went on. VYCC harbors those types of relationships: sharing a challenging experience tends to result in really strong bonds.”

“Weekly ‘Member Evaluation’ meetings were where the best conversations



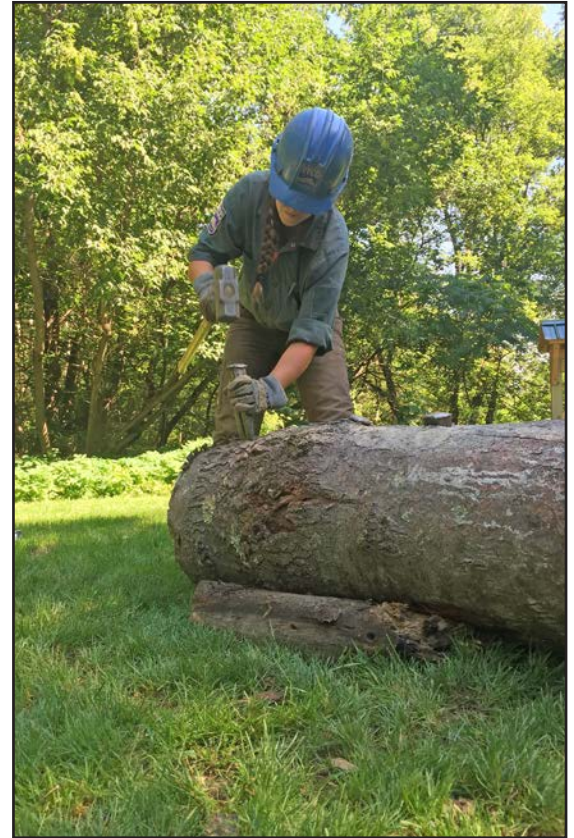
Amanda (center) at Crew Leader training on the VYCC campus in Richmond

started to come out. These teenagers struggled with how to present themselves to their peers. In one-on-one meetings, people started to open up, even in the discipline process.”

One Corps Member was frustrated with peers, and acted out. We had to write him up. We got to the conversation and the floodgates opened. He spoke about a loss that he hadn't talked with anyone about. He knew that as a leader I was there for him rather than there to tell him **what to do.**

As Amanda led her crew, she also grew as a leader. She shares, “I didn't really know the depth of my patience and capacity for understanding. It pushed me in those areas. Even if it was challenging in the moment, to have your resilience tested is a valuable experience.”

Amanda splits a log to build a trailside bench at the Barre Cow Pasture



Leaders Empower Fellow Leaders

As a Woodstock native, Seth completed two summers with VYCC on the Woodstock Community Crew. In 2015, just after high school graduation, he signed on as a six-month AmeriCorps Crew Member with VYCC. “I wasn’t quite sure what I wanted to do. I wanted time to think about it,” he says. At the end of his VYCC experience, Seth shares, “I realized I can’t take a desk job. I decided I want to join the Navy. VYCC requires discipline. In order to get a job done you have to focus and push past your limits. That’s a great parallel to the military.”

Tinian, one of Seth’s Crew Leaders, describes the crew’s projects: “We worked with the US Forest Service in Rochester. Holly Knox and Seth Coffey set us up for success by training us in how to use radios and giving us a lay of the land. We camped at the USFS Headquarters, and got to know people from different areas of the Forest Service. It was really educational to learn what kinds of jobs are available.”

Seth also considers chainsaw work a highlight: “It was my first time doing organized chainsaw work. I learned a lot about safety precautions, more efficient ways to cut down a tree, and creating early successional habitat. I finally know how to do it right.”



Tinian (right) at Crew Leader training, with her Co-Leader Chris (left)

Corps Members practiced leadership skills through a weekly stint as ‘One Week Leader.’ Tinian recalls, “Pairs often weren’t best friends, and sometimes had conflicts. They had to learn to work together.” Tinian and her co-lead offered structure, then stepped back and “let them run things how they wanted and see how it turned out. We met beforehand and debriefed at the end.”

“Once you get going it’s not too hard,” shares Seth. “[One of my Crew Leaders] had extensive experience in trail building that was invaluable. He helped identify which Corps Members might do best at which tasks.”

Doing ‘One Week Leader’ **terrified me.**

It was an excellent learning opportunity, getting thrown into a position of power and organizing **people to get work done.**

Seth adds, “My Crew Leaders were amazing people: fun to talk to, good leaders and organizers, and made everything go smoothly. I don’t use the word ‘friend’ lightly and I consider them friends.” Tinian is currently leading a wilderness therapy crew in Alaska, and reflects: “I feel happy that I did VYCC. It helped me handle stress in a positive way.”



Seth (front right), Tinian (back left), and the crew of Cons 4 carry a steel I-beam to a bridge construction site in Jay

CONSERVATION PROJECT HIGHLIGHTS

Recreational Trails (Jay)

Project Sponsors: Vermont Agency of Transportation, Jay Community Land Trust

An AmeriCorps crew expanded multi-purpose trails at the Jay Community Recreational Centre, including a new connection to the Montgomery Mountain Biking Association (Grateful Treads) trail system.

“The first couple days we were working in hot humid weather. None of us knew what we had gotten ourselves into. Then we had a week of nonstop rain. We were totally soaked and uncomfortable. It’s a growing experience. You feel miserable, then there’s a breaking point and you laugh it off. We definitely got to that point.”

State Park Restoration (Waterbury, Groton, Barton, Elmore)

Project Sponsor: Vermont Department of Forests, Parks and Recreation

One highlight among many projects across four parks is creating access for users of all abilities in accordance with ADA standards. Corps Members converted two fishing platforms into universally accessible platforms at Waterbury Center, and helped construct a universally accessible trail at Crystal Lake State Park.

“I gained valuable skills in carpentry through building composting toilets at Waterbury Reservoir. I learned to be a leader. I can also see exactly how I can make a difference through conservation work - our crew has directly impacted the people who enjoy Vermont State Parks. I want to continue this kind of work and help to ensure that all people can have access to nature.”



Watershed Health: Class IV Erosion Projects (Statewide)

Project Sponsor: Department of Environmental Conservation

Three crews completed backroad projects in the Lamoille, Winooski, and White River basins to reduce erosion and phosphorous loading. Primarily, crews installed drainage structures to allow water to move off the roadway while leaving sediment behind. Crews installed 3 retaining walls, 4 check dams, 6 culverts, 8 grade dips, 15 armored drains, 16 rock aprons, and 67 water bars along 88 road stretches (5.5 miles). Capacity building support for watershed projects has been provided by the High Meadows Fund and the Lintilhac Foundation.

“We all enjoyed the intellectual challenge. We had to find where the water was coming from, decide what drainage structure we needed in each area, and then build those structures. I knew nothing about algae blooms and how that was choking out native species, which is surprising because I’m from Vermont. It instilled a curiosity in me as to what else is going on **in the environment.**”

Recreational Trails (Norwich)

Project Sponsors: Vermont Agency of Transportation, Norwich Land Management Council

Since 2008, the Norwich Land Management Council and VYCC have completed improvements on the Bill Ballard Trail. This vital trail is at the heart of the town’s extensive network that connects Gile Mountain, the Connecticut River, the Appalachian Trail, and the Silvio O. Conte National Fish and Wildlife Refuge. In 2015, a crew constructed a new 25’ bridge and replaced 3 existing bridges.

FARM PROJECT: HEALTH CARE SHARE

The Health Care Share (HCS) is a community-based public health project that connects Vermont families in need with a free, weekly supply of farm-fresh food at their doctor's office. HCS members qualify for enrollment through their primary care provider on the basis of food-insecurity, low-income, diet-related disease and addiction recovery status. A University of Vermont Medical Center study shows that patients who participate in the HCS report increased fruit and vegetable intake, decreased prepared food intake, increased sense of overall health, and increased confidence cooking vegetables.

Since 2012, HCS has expanded to **four** major medical centers, served **880** families, and engaged nearly **200** youth. VYCC applies its youth crew model to all HCS sites by employing area youth and Crew Leaders.

In 2015, HCS distributed 90,800 pounds of food, to over 400 families, impacting approximately 1,600 individuals. HCS members received 15 shares over six months that included fresh, locally grown produce, two pasture-raised chickens, and newsletters containing nutrition information, tips, and recipes.

The Farm at VYCC continues to produce and distribute shares to members at Central Vermont and University of Vermont Medical Centers, both original HCS sites. A total of 300 weekly shares were distributed to member-families at 10 primary care clinics in Chittenden and Washington counties. Together, we



Haley, a participant in the 2015 Venture Semester Program, cleans carrots for Health Care Shares

increased production and improved distribution systems, refined funding mechanisms, and enhanced services for HCS members.

The HCS at Rutland Regional Medical Center is led by Rutland native and VYCC alumna Heidi Lynch, Program Coordinator at the Vermont Farmers Food Center. The project served 75 families in 2015 and expects to enroll 125 in 2016. VYCC's role is to provide consultation, as well as recruit and manage crews. Rutland HCS demonstrates that the HCS model is replicable and strengthened by participation from a local organization and community stakeholders.

Southwestern Vermont Medical Center (SVMC) piloted a 30-member HCS program to serve cardiac rehabilitation patients. In this model, food was purchased from a local farm, and VYCC provided project information and advice to the SVMC team. In 2016, VYCC expects to add a Bennington Community Crew, employing four area youth and a leader on this project.

A Health Care Share member describes the impact the program had on his family: "I've never had vegetables taste like this and I really haven't cooked with them that much. But now, with what you've set up for my family, it's changed our whole diet."



Students from Winooski High School prep vegetables grown on the Farm at VYCC for a meal

Leaders Take Initiative

Heidi Lynch spent the summers of 2012 and 2013 on the Farm at VYCC, where as an AmeriCorps VISTA she helped launch the initial season of Health Care Shares with Central Vermont Medical Center.

A Rutland native, Heidi previously worked for Greg Cox, the owner of Boardman Hill Farm and founding President of Vermont Farmers Food Center. In 2013, Heidi began talking with Greg about her passion for the Health Care Share project, and Greg connected her to a grant opportunity through the Rutland Regional Medical Center's Bowse Health Trust.

The Vermont Farmers Food Center collaborated with VYCC and the Vermont Department of Vocational Rehabilitation to create a VYCC crew of Rutland-area youth who worked on local farms to grow and harvest vegetables for Health Care Shares.

Rutland partner farms are startup farms involved in Vermont Farmers Food Center's Incubator Program: new farms operate on loaned lands of established farms so they have access to equipment and guidance of experienced farmers. Together, they achieved the quantity and quality of produce needed for Health Care Shares.



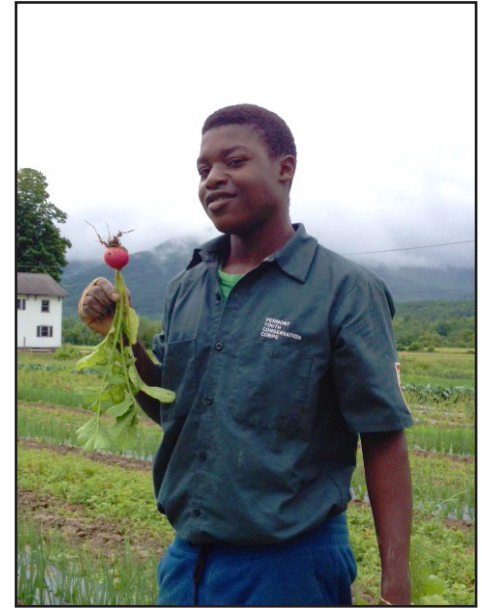
Farm Crew members harvest vegetables for the Health Care Share

“The reception in the community has been tremendously successful, and inspiring to the farming community,” says Heidi. “We’re excited to expand the crew season, increase the number of shares, and work with a new farm in 2016.”

The crew is empowered

by their participation in the field, visits to the Vermont Foodbank, going to the farmers market - getting the big picture. The fact that this is a crew made up of Rutland youth drives home the importance of this work, and makes them proud of what they do, and inspires them to continue **to be a part of this work.**

“In August, at the height of the season when there’s so much food to be harvested, food that we cultivated together all summer, the crew took the lead in helping each other and in keeping one another motivated. Because the crew had such an intimate understanding of the whole system, they were able to anticipate next steps and take the initiative to do what needed to be done.”



Elli, a summer Farm Crew member from Winooski High School, harvests radishes for Health Care Shares

Leaders Build Trust

Peter Nichols, School Instructor for the Mount Mansfield Union school crew, is proud of the progress his students have made:

“I have seen dramatic improvements in the reading abilities of my students. This comes from everyday practice and providing a safe space for students to learn. On Mondays we cook a meal in the kitchen. We talk about our weekends which builds trust and gets us set up for a place of learning. We established an open culture of feedback, both from me and from them, which has been really positive.”

A total of 41 youth across three school districts benefited from the High School Leadership Program in 2015. Curricula included writing and reading projects related to service, sustainable agriculture, forestry, and watersheds.

Students completed projects in erosion control, sugaring, fruit tree management, waste reduction and upcycling, wilderness first aid, animal tracking, and forestry. They also completed a unit on career readiness, and for most, this was their first time preparing for the workforce. These experiences not only introduced students to new skills, but gave them hands-on inspiration to conduct additional research, analysis, and reflection when they return to a traditional classroom.



Students pause construction of a chicken coop to take a picture with the partially finished structure

“ Hands-on learning has helped me to earn better grades. The skills I have after being a part of this program will hopefully help me get a job.
-Nathan



Two students work together to build a chicken coop

I learned a lot about being healthier and reading labels. Now I pay more attention to what I'm buying and look at the labels to understand what I'm eating.
-Cody

Students conduct water quality tests of a local stream

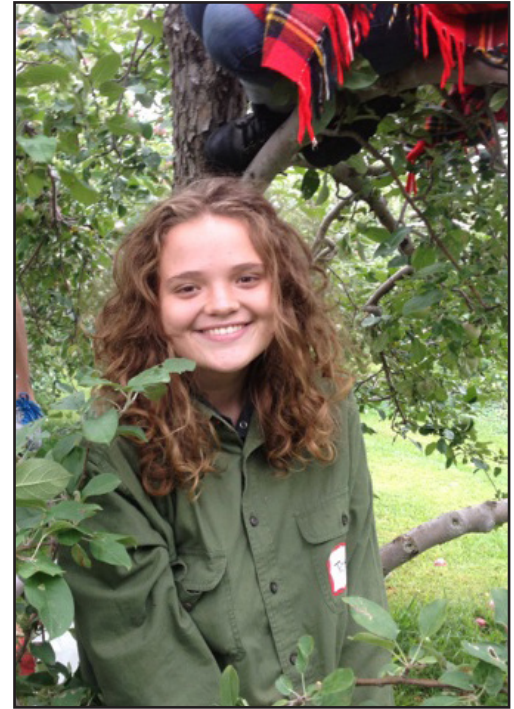
Leaders Build Community

Venture Semester is a new, immersive gap year program that offers inspiring, hands-on experiences in Vermont agriculture, food systems and public health to recent high school graduates. As a tuition-based program, Venture's purpose is to prepare participants for future academic and career opportunities.

Corps Members enhance critical thinking and writing skills while learning what it means to live away from home, make new friends, and gain independence. VYCC works closely with Vermont Technical College, a member of the Vermont Higher Education Food Systems Consortium, to deliver this experience.

2015 Venture participants received unparalleled education from food producers, policy makers, journalists, professors, homesteaders, chefs, and doctors while completing service projects. They benefited from unique access to institutions of higher education.

For Tessie McDonnell, a Rutland native who enrolled after her summer as a Corps Member, Venture presented an opportunity to explore education and career options with a group of peers. "[After Venture] I don't



**Venture Semester participant
Tessie McDonnell learns about fruit
production while at the Yates Family
Orchard in Hinesburg**

think I could not go to college, I love to learn," says Tessie. "I want to learn about everything."

Venture Crew Leader Connor Magnuson shares this reflection on his crew's experience:

Something happened halfway through.

We started to learn about the intricacies of our **community**. Our little idiosyncrasies that made us love one another and at other times get a little annoyed. This is the compromise you make in a group as tight as we were. We started to notice when someone wasn't feeling well, if someone was particularly emboldened today...

Exhilarating, tiresome, revealing and so **FUN!**



Venture Semester Crew Leader Connor Magnuson works alongside his crew

TEN YEARS AT THE WEST MONITOR BARN

Perhaps you are among the many generous individuals that made a gift to our 2005 capital campaign, attended one of the 100+ weddings held here to date, ran in Freaky 5K, skied Bolton to the Barns, or danced at a Denim and Diamonds fundraiser. Or perhaps you are among the 2,100 people that have volunteered on the Farm at VYCC. If so, you have contributed to:

- Year-round youth development programming
- 50 weeks of residential Crew Leader training on site
- Return of 20 acres to active, sustainable agricultural use, which has produced 317,000 pounds of vegetables and poultry
- Conservation of 400 acres within the Chittenden Uplands
- Generation of 375,363 Kwh of solar electricity (and counting!)



In 2015, VYCC's Board of Directors named VYCC's home the Thomas L. Hark Leadership Campus. We also dedicated the Hay Mow (top floor of the West Monitor Barn) to former Board Chair David Conard. These two outstanding leaders join the following friends of VYCC whose contributions are acknowledged in and around the West Monitor Barn:

- Thomas P. Johnson – *Trustee emeritus*: Johnson Conservation Room
- Mitch and Kim Fleischer and family: the Fleischer Family Kitchen
- Caroline Wadhams Bennett – Founding Trustee: Caroline Wadhams Bennett Board Room
- Donald Bicknell – Volunteer: Bicknell Room
- Donors that made a gift of \$1,000 or more to the capital campaign for the West Monitor Barn have an engraved brick in the courtyard

LEAVE A LEGACY

A gift this year supports today's youth. We invite you to also support tomorrow's youth by joining the Caroline Wadhams Bennett Stewardship Circle. We received the following note from our friend Meredith Babbott this year, along with a gift from her late husband David's estate:

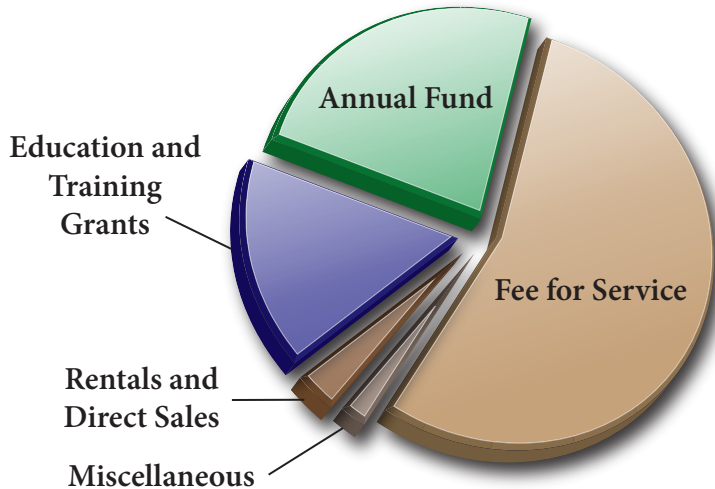
This note will confirm to you what you already know, that VYCC is a charitable recipient of a gift from my estate. I applaud the work you are doing with youth and for the environment in which they and we all live. To work outside, in the sun and the rain, in the woods or parks, moving rocks and changing water flow is healing and revealing to the mind, body, and spirit... However you use the gift, I have utmost confidence that it will be utilized wisely and well – and will continue to help teach individuals to take personal responsibility for all their actions.

To learn more about planned gifts, please contact Breck Knauff at 434-3969 ext. 110 or Breck.Knauff@vycc.org

ANNUAL OPERATING BUDGET

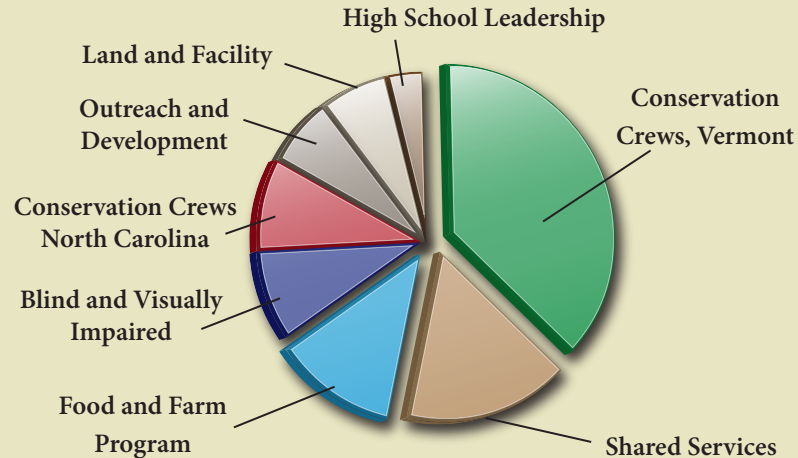
Summary of Revenues*

Annual Fund	\$ 777,220
Education and Training	\$ 518,000
Fee for Service	\$ 1,761,446
Rentals and Direct Sales	\$ 93,424
Miscellaneous	\$ 67,927
Total Revenues	\$ 3,218,017



*Unaudited figures as of 5/11/16

Conservation Crews, Vermont	\$ 1,162,256
Conservation Crews, North Carolina	\$ 265,729
Food and Farm Program	\$ 371,428
Outreach and Development	\$ 212,401
Shared Services	\$ 502,827
High School Leadership	\$ 106,570
Blind and Visually Impaired	\$ 277,769
Land and Facility	\$ 203,944
Total Expenses	\$ 3,102,923



Summary of Expenses

PROJECT SPONSORS

We are proud to complete educational fee-for-service projects in partnership with the following organizations:

AmeriCorps
Catamount Trail Association
Central Vermont Medical Center
Champlain Valley Farmer Coalition
Chester Conservation Commission
Conservation Trust for
North Carolina
Cross Vermont Trail Association
Ellerbe Creek Watershed Association
Fairfax Recreation Department
Friends of the West River Trail
Fund for North Bennington
Hunger Free Vermont
Jay Community Land Trust
Jericho Trails Committee
Jericho Underhill Parks District
Local Motion
Montpelier Parks Department
Mount Mansfield Union High School
National Fish & Wildlife Foundation
National Park Service
NOFA-VT
Norwich Land Management Council
Our Community Cares Camp

Putney Conservation Commission
Putney Mountain Association
Retreat Farm
Richmond Family Medicine
Salvation Farms
SerVermont
South Burlington Recreation &
Parks Department
Southwestern Vermont
Medical Center
The Nature Conservancy,
Vermont Chapter
Town of Colchester
Town of St. Albans
U-32 High School
Unique Places, LLC
US Army Corps of Engineers
US Fish and Wildlife Service
US Forest Service
UVM Medical Center
Vermont Agency of Transportation
Vermont Association of Snow
Travelers, Inc.

Vermont Community Garden
Network
Vermont Department for the Blind &
Visually Impaired
Vermont Department of
Environmental Conservation
Vermont Department of Forests,
Parks, & Recreation
Vermont Division of Vocational
Rehabilitation
Vermont Farmers Food Center
Vermont Foodbank
Vermont Gleaning Collective
Vermont River Conservancy
Vermont Technical College
Vermont Vegetable & Berry
Growers Association
Wake County Department of
Parks & Recreation
White River Partnership
Winooski High School
Winooski Valley Park District
Woodstock High School

2015 LEADERSHIP GIVING

VYCC's continued success would not be possible without the leadership and generosity of the following donors, who made significant investments in our organization and programs in 2015:

\$20,000 or more

Canaday Family Charitable Trust
The Gannett Family
GDS Legacy Foundation
George W. Mergens Foundation
Gibney Family Foundation
High Meadows Fund
Jack & Dorothy Byrne
Foundation
Thomas P. Johnson
Lintilhac Foundation
Lookout Foundation
Lyman Orton & Janice Izzi
Serena Foundation

\$5,000 - 19,999

Anonymous
Bay & Paul Foundation
Fanny Allen Corporation
Mitch & Kim Fleischer
Jerry Greenfield
Hugh & Shana Griffiths
Harvey L. Miller Family
Foundation
Hunger Mountain
Cooperative
Merchants Bank
The Morris & Bessie
Altman Foundation
National Life Group
Foundation
New Visions Foundation
Robert L. Crowell
Charitable Fund
George & Judy Russell
S&C Harvest Foundation
Sid & Cecelia Lance Family
Foundation
Elizabeth Steele
The Sustainable Future
Fund of the Vermont
Community Foundation
Amy E. Tarrant
Vermont Women's Fund

\$1,000 - 4,999

Patricia & Bill Alley
Maria Aveni
John C. Broughton
Burlington Sunrise Rotary Club
Judith A. Churchill
Edward & Nancy Colodny
Concept 2, Inc.
Euonymus Fund
Matthew & Lisa Fargo
Barbara E. Fargo
James & Lyn Feinson
Frances Foster
Liz & James Foster
Judy Geer & Richard
Dreissigacker
Alexander Graham
Matthew Greenberg
Hart Foundation
Sylvia R. Hill
Irene & Jeffrey Horbar
IBM Corporation
International Paper Foundation
Jonathan M. Jamieson
Sally Johnson

Nancy R. Lothian
David S. Martin
Isabella & Peter Martin
Linda McGinnis & Sam Carlson
John & Penny Moore
Marion Mueller
James & Elizabeth Murphy
Northfield Savings Bank
The Patrick Foundation
The Powell Family Charitable
Trust
Scott Rathke & Frances Gregg
Rathke
Signa Read
Susan J. Ritz
Jan & Mary Jane Rozendaal
William Saunders
Walter A. Scott
Kathleen Ovitt Upton
Vermont State Employees Credit
Union
Caroline Wadhams Bennett &
Peter Bennett
John & Mary Wilson

Thomas Hark is the
Founding President of
VYCC and served from
1986 until 2015. The
following donors made
gifts in his honor.



Susan & Jerry Adams
Stephen Anderson &
Jacquelyn Walker
Kristina & Doug Brines
Richard P. Cowperthwait
Charles L. Cutting, Jr.
James & Lyn Feinson
Richard First & Jenny
Evans First
Lawrence C. Fisher
Joe & Renae Fusco
Naomi W. Galimidi
Amy Golodetz & Gregory
Leech
Hart Foundation
Jonathan M. Jamieson

Breck Knauff & Margaret
Fowle
Ed & Dona Koenemann
Wendy W. McArdle
Robert Naylor
Katherine & Ry Parcell
Thomas W. Smith & Anne
McMenamin
Richard Stott
Caroline Wadhams
Bennett
Susan & Michael Willard
John Zaber & Farley A.
Brown
Deborah & Robert First
Family Foundation

2015 ANNUAL GIVING

In Memory Of Donald Lewis

Edward Adler
Grace Birchmore
Carol Burbank
Evarts Family Trust
Glen Peak Electric, Inc.
Linda & Laurier Godard
Nancy & Arthur Green
Natalie Hall
Roger & Emy Kendall
James & Donna Kendall
Iris Lash
Carol Lewis
Judi & Robert Manchester
Eileen R. Nikel
Walter & Jean Peck
Rhaeto A. Pfister
Patricia & Terry Potter
Richard N. Prince
J. D. & Hope Schultz
Barbara T. Southworth
Vicki Lynne Tucker
Lynne Walther
John M. Welsh
Sue V. Wiles
Lucille & James Williams



\$250 - 999

Anonymous (4)
Edward Adler
David & Jennifer Adsit
David & Meredith Babbott
Donald & Irene Ballas
Christine Barnes
Melita Bass
David Blittersdorf
Dr. Carol F. Boerner
Katherine & Albert Borne
Mark & Joan Brown
Frederick & Judith
Buechner
Joan H. Carney
Champlain Investment
Partners, LLC
Dr. Paul & Amy Chervin
Lorne Church
Sarah Davies
Deborah & Robert First
Family Foundation
William J. Delorenzi
Rolf Diamant & Nora J.
Mitchell

Pamela Duprey Perry
Stan & Marsha Faryniarz
Peter & Nancy Fisk
Katey Foster
Marcia & Bruce Fowle
Gay & Lesbian Fund of
Vermont at the direction
of Nancy Schultz
Joan L. Gignoux
Prospero Gogo & Amy Lilly
Amy Golodetz & Gregory
Leech
Katharine Greenewalt
Robert Hamill
Hollison Hanson
Andrea & Christopher
Hazuda
Patricia & Richard Hellawell
Carl & Carlanne Herzog
Cheyenne F. Holland
Gerald K. Hornung
Trisha & Nathan Hunt
Fred Hutchins
James E. Robison
Foundation
Catherine & Jed Kalkstein

H. Prabhakar & Nirmala
Kamath
Paul Kendall & Sharon
Rives
Patrice Knapp
Fred Lager
Mark & Lisa Lagerquist
Mark & Andrea Letorney
Main Street Landing
Caroline & Gregg Marston
David Marvin
Drs. Martha D. McDaniel
& Stephen Plume
Harriette A. Merrill
Margaret A. Miklovich
Ryan Mitchell
Karin Morrow
Barbara Myhrum
New England Federal
Credit Union
Thomas Noble
Gail Osherenko
Christine M. Osmond
Katherine & Ry Parcell
Anoy Pattersen
Paul Frank + Collins

PEER Associates
Jean Peterson
Judy & Jim Pizzagalli
Amy & Andrew Powers
Chris & Fred Pratt
Milton Russell
Elisabeth W. Russell
Laura B. Scott & Nick Orm
Leigh Seddon & Ann Aspell
Alice L. Shaner-Simpson
Gwendolyn Shelton
Brenda Sirovich
Nicholas A. Skinner
David Stoll & Elizabeth Sutton
Orly Yadin & Bob Summers
R. Day Surles
James C. Thomas
Marie & Peter Thomas
Elizabeth & Nicholas Deane
Joan A. Verchereau
Kate Villa
Chip & Corinne Wadhams
Washington Electric Coop
Barry & Elsa Waxman
Ann W. Weathers
Cheryl Wilfong

Lee & Joyce Wilson
Robert & Margaret
Woolmington
Thomas W. Yurista

\$100 - 249

Anonymous (4)
Bonnie Acker & John Davis
Mary Adelstein
Richard & Anne Adler
May Affleck
Kevin & Shannon Albrecht
Susan Bliss Alden
Judith L. Allard
Liora Alschuler
John Arnesen
Chris & Deanna Bailey
Lucinda Bailey & Rick
Weingarten
Gary L. Baker
Balance Yoga LLC
Carolyn F. Barnes
Sarah Beard
Nancy Belisle
Charlotte Belser
Jere Berger

In Honor or Memorium in 2015

In Memory of

David Conard

Caroline & Gregg
Marston

In Honor Of

Bob Hirsch Memorial Fund

Joan H. Carney

Breck Knauff

Shelley Richardson

Caelan Keenan

Annie Norris

Duncan Rollason

Holly J. Killary

Ellie Messier

Mary L. O'Brien

Joseph Fusco

Thomas Kennedy

Kyle Clark

Thomas Kennedy

Linda McGinnis, Jim Feinson, & Breck Knauff

Scott W. McArdle

Lisa Fargo

Ryan Mitchell

Matt Fargo

Barbara E. Fargo

Nate & Dana Kenney

Sarah G. Kenney

Neal & LilaLee Fisher

Tara L. Walzel

Paul Mergens

Matthew & Lisa Fargo

Paul Schmidt & Family

Sabine Gibson

Sabine Berger

Jere Berger

Taylor Fargo & Brian Strachan

Andrea & Mark

Letorney
Adriana Letorney
Kristen Lindquist

2015 ANNUAL GIVING

Special Thanks to the **Burlington Sunrise Rotary Club** for their continued support of **UYCC** through the **Gear Swap**. In 2015, we raised **\$2,100** for **UYCC**!



Jeffrey Bernstein & Stacey
Cushman
Dean Bloch & Valerie Wilkins
Anne Bower
Sally Bowers & Howard
Fenton
Darby Bradley
Anne Brin & J. Mark Billian
Kristina & Doug Brines
Bristol-Myers Squibb
Foundation
Scott W. Brown
Alice Brown & Andrew
McClellan
Ralph & Lenore Budd

Robert Burge
Wayne F. Burke
Elizabeth Bushueff
Margaret & Paul Calter
Doug Campbell
Robert Carmody & Mary
Scripps
John & Nancy Chard
Paul Charow & Ellen
Hamilton
David & Dorothy Cheever
Allen & Carol Cherin
William & Priscilla Chester
Nancy Chickering &
Kristopher Hammer
David Christiansen
George Clark
Marcia Clinton
Antoinette & Anthony
Colletti
Carol S. Cone
John & Polly Connell
Frederick M. Coonradt
Fernando & Virginia Corrada
Catherine A. Couture
Anne Cramer
Jackie E. Cruickshanks
Thomas J. Curchin
Charles L. Cutting, Jr.
Martha Ann Davies
Linda F. W. Davis
John Dillon & Kimberly

Hagen
John & Alida Dinklage
Ann & John Dinse
Jeffrey Downs
Sherry & John Dudley
Matthew Dunne & Sarah
Stewart Taylor
Sarah Duval
Ann & Stanley Emery
Dana Engel
Mark English
Sylvia H. Ewerts
Jonathan & Louise Fairbank
Teresa Fama
Mary Fenn
Stephen L. Ferber
Richard First & Jenny Evans
First
Lawrence C. Fisher
Debbie Fiske
M Teena Flood
Milton & Carolyn Frye
Heather & Dave Furman
Joe & Renae Fusco
Lyn & Robert Gaffney
Naomi W. Galimidi
Galvin G. Gall
Emily & John Gennari
Sabine Gibson
Barry Glick
Joel Goldberg & Barbara
Burroughs

Stephen Gould
Donald Graham & Carol Barr
Ruth Grandy
Gary & Tertia Griffith
Robert Hagen & Kathy
Astrauckus
Rheba & John Haley
Mark Halverson & Edee
Edwards
Robert Halverson
James & Marilyn Hand
Hjonis Hanson
John & Marie Harding
Thomas & Dana Hark
Larene Hark
Geordie & Suzanne Heller
Randy & Karen Hesse
David & Kathy Hooke
William & Gertrude Horridge
Mark Hoskin & Denise
Kilduff
David & Trina Hosmer
Katharine & David
Hutchinson
Nancy Jaffe
Flora Jestice
Mary Louise Johnson
Jane Johnston
Lydia Johnston
Gerard & Emily Jones
Peter Jones & Therese
Donovan

James & Norma Jung
Eleanor Kaczmarek
David & Wilma Kelley
Thomas Kennedy
Richard & Janet Kilburn
Judith & Linus Kinner
Emma Kirn
Scot Kline & Victoria Brown
Stanley A. Knapp
**Breck Knauft & Margaret
Fowle**
Lisa & Bill Koelewyn
Ed & Dona Koenemann
John G. Kristensen
Susan Kruthers
William & Sandra Kuehn
Bernard Lambek & Linda
Sproul
Lisa Lamdin
John & Claudia Lamperti
Jeanne LaPerle
Priscilla Kimberly & Jerry
Lasky
Guy & Nadia Leadbetter
Carolyn Leighton
Carol Lewis
Philip & Susan Lincoln
Thomas & Julie Longstreth
Calvin & Ann Low
Theodore Lyman & Virginia
Clark
Judi & Robert Manchester

David Marsters
Patricia Martin
Benjamin & Anne Mason
Scott W. McArdle
James McCabe & Laurie Ling
Lori McCarthy
Rich & Jayne McGarry
J. Bishop & Betty McGill
Mark McGrath
McLean Electric
Robert & Beverly McMullin
Marilyn McQuaide & Thomas
Freiberger
Frederick Mecke & Carol
Doerflein
Dixie Lee Mercier
Robert & Louise Messner
Nicholas & Bridget Meyer
Elizabeth Miles
Ellen Miles
Elise & Robert Mills
Patrick R. Miner
Wendy & Robert Morgan
Richard Morley
Roger Murphy & Julie
Bomengen
Tommie Murray
NASBO
Nancy L. Natvig
Robert & Dorsey Naylor
Audrey Nelson
North Country Federal

Credit Union
Northfield United Methodist
Women
Anne Oakes
Linda Olson
Sharon O'Neill
Ann G. Ottaviano
Janet C. Page
Bill & Emma Parcell
Faith J. Parker
Ruth Partridge
Dan & Mary Patch
Rhenee Placey
Lucia Port
Donald Post
Peter & Patricia Post
Eleanor Preiss
Michael W. Priestley
Quechee Garden Club
Donna Quinlan
John & Patti Reid
Mark Renson
Shelley Richardson
Cammy J. Richelli
Donald S. Robinson
Jane Roeder
Russell Roeder
Carl & Debra Runge
Robert Sartini
Wendy Saville & Thomas
Clavelle
Lisa Schamberg & Patrick

Robins
Rebecca A. Schubert
Daniel Schuckers & Sara
Lecleire Schuckers
Dr. John & Nancy Schullinger
J. D. & Hope Schultz
Cynthia Seybolt
Robert & Anne Shapiro
Marc Sherman
John & Nancy Simson
Douglas Slaybaugh & Nancy
Hayes
Eric & Dale Smeltzer
Todd Smith & Jennifer Sutton
Thomas W. Smith & Anne
McMenamin
Barbara T. Southworth
Margaret Sparrow
Linda Squier
John C. Stewart
Byron & Lee Stookey
Loren R. Strong & Olivia
Olson Strong
Nick Studds
Arthur & Sue Stukey
Craig Sullivan
Paul & Judy Tartaglia
Jennifer & Robert Turner
Union Street Media
David J. Usher
Carol Anne Vassar
Thomas & Katharine Villars

Winifred S. Vogt
Harry & Virginia Waltner
Jim & Jennell Watson
Thomas & Barbara Weakley
Harris & Eleanor Webster
John M. Welsh
John P. Wesley
Beverly West
Western Slopes Business
Association (WSBA)
Maureen White
Robert & Roy Whitmore
James Wick
Louisa Wilcox Anderson &
Jack Anderson
D. Patrick & Kim Winburn
Dan & Mary Wyand
Chris & Tracie Yindra
John Zaber & Farley A.
Brown
Walter Zablonksi
Marguerite Zabriskie
\$1 - 99
Anonymous (17)
J. Andrew Adam
Mary Adams
Susan & Jerry Adams
Donald Aikenhead
Robert & Pamela Allembert
Judd Allen & Elaine
Allen-Smith

AmazonSmile Foundation
Stephen Anderson &
Jacquelyn Walker
W. Spencer & Nancy Baker
Allen & Lorilla Banbury
Calvert Barksdale
Stephen & Jeanne Barner
Doris & William Baron
Barbara Barry & Michael
Pacht
John & Augusta Bartlett
Elizabeth Bassett & John Pane
Dennis Bates
Helen Beattie & Brendan
Buckley
Thomas Beck
Harold Beebe
Alice Beisiegel
Kaitlin Belanger
Amy & Jason Bell
Iris Berezin
Kay Bergedick Doolan &
James Doolan
John & Betty Berlenbach
James & Judith Bernat
Richard Bernstein
Alan K. Betts & Karen James
Grace Billings
Robert K. Bing
William & Teresa Binney
Grace Birchmore
John & Marguerite Bolog

2015 ANNUAL GIVING

Special Thanks to the **Central Vermont Medical Center** community for their efforts in raising **\$23,900** for our Health Care Shares, through Bottle Drives, Cafeteria Coin Drop, Farm to Table Dinner, Fun Run, Raffle, Individual Gifts, and Payroll Deductions.



Theodore & Donald Boniface
Margaret Borden
Janet Bossi
Naomi Bossom
Michael T. Boston
Gerhard & Susan Botha
Judith Bouchard
Colleen D. Bourne
David & Janet Bowker
Robin Brackett
Guy & Nancy Breault

Phoebe Bryan
Carol Burbank
John Burgess
Douglas & Mary Burnham
Mary E. Byrnes
Rita M. Calkins
Landa Camilli & John Brusa
David Caplan
Paul M. Capriola
Emma A. Carey
F. Peter Carothers
Sarah Carter
Peter & Deborah Carter
Ted & Anne Castle
Paul & Sandal Cate
Thomas & Christina Cavin
Alice & Alfred Ceppetelli
Alice K. Charkes
Robert & Kathryn Clark
Joseph Clay & Juanita Burch-Clay
William & Constance Coates
Scott Cole & Josephine Reed Cole
Angela W. Combes
Kenneth & Donavee Copenhaver
Katherine L. Coppock
Stanley & Carol Corneille
Robert Costantino
Paul Costello
Grace & Steve Cothalis

Rebecca Counsell
Richard P. Cowperthwait
Alice & Dale Critchlow
Donald Crofut
Ruth & Ronald Curtiss
Martha M. Dallas & Lucy Gluck
Amy Darley & Avram Patt
Gerald & Karin Davis
Rebecca Day
Gloria & Dale Deming
Jane Denker
Reed Detar & Christine Maute
Pearl Dewey
Judith L. DiMario
Patricia L. Dion
Thomas & Patricia Disilvio
Sarah L. Dopp
Ruth E. Drake
Howard Duchacek & Susan Wisehart
Jennifer Dudley-Gaillard
Patricia J. Dupree
Rebecca Durant
David & Gertrude Durfee
James & Beckie Eakin
Peter & Ann Earle
William & Marilyn Edgerton
Thomas Ehrenberg & Jean Brewster Giddings
David J. Eliassen

John Elkins
Brenda Ellis
Katherine Emerson-Davis & Keith McCrae
Mary W. English
Steven & Catherine Eustis
A. Murray Evans & Diane Montie
Everts Family Trust
Dr. Richard & Janet Fabricius
Hannah Fairbank
Stacy Fender & Denelle Berube
Karla R. Ferrelli
Richard & Marilyn Fetzer
Mary & Peter Flanagan
Juliette M. Fleuriel
John & Jackie Flickinger
George & Helena Fortier
Carol Fournier
Caroline Betsy Franzoni
Virginia & Richard Freeman
Patsy & Patrick French
Walter & Anne Frey
Carolyn Friberg & Carl Yalicki
Noel & Caroline Fritzinger
Edward A. Gale
Alice Gardner
Maxine L. Garfinkel
Emile & Janice Georgett
Leonard J. Gerardi & Lauren

Jarvi
Edward F. Getchell
Seth Gibson
Ernest & Charlotte Gibson
Steve Gillette & Cynthia Mangsen
Pamela S. Gillis
Glen Peak Electric, Inc.
William & Crystal Glidden
Linda & Laurier Godard
Kenneth & Sue Golden
Irving & Sheila Goldman
Genevieve A. Gomo
Google Matching Gifts Program
Ann Gotham
Barbara Gramuglia
Joseph & Susanna Grannis
William J. Graves
Reid & Jane Grayson
Tom & Connie Green
Nancy & Arthur Green
Greystone Estates Residents Association, Inc
Richard Grumbine
Patricia & William Guarino
Dorianne D. Guernsey
Regina & William Haddock
William & Leslie Haines
Stanton & Cynthia Hall
Azal & Myrtle Hall
Natalie Hall

Ellen Halperin	<i>Dorothea B. Jesser & Daniel</i>	Jack Learmonth	Dr. Robert James McKay, Jr.	Rollin & Margo Norris
Richard & Cristine Hammer	<i>Mapes</i>	Linda Lees	Alan A. McKibben	Annie Norris
Crosby Hard	David Jones	Adriana Letorney	Priscilla McQuade & Tim	Leslie & Timothy Nulty
Robert & Karin Hardy	Linda B. Kane	Carolyn A. Lettieri	Sienkiewicz	Melanie O'Brien
Rosie Harlow Segal	Keith Kasper & Francine	Theresa Lever	Cordelia Merritt	Mary L. O'Brien
Christopher & Sarah Harris	Pomerantz	Michael & Sandra Levine	Edward H. Merritt & Beth	Richard & Patricia Ann Oden
Mary K. Harris	Peter Kassel & Carol Irish	Steve Levine & Deidre	Skilton Merritt	Jessie & Conrad Orr
Tom Hart & Cara Caparelli	Sue & Dennis Kaufman	Scherer	Kathryn & Robert Mesaros	Nancy P. Osgood
David J. Hathaway & Carolyn	Chrisman Kearn	Kristen Lindquist	Sara & William Mikell	Solveig Overby
J. Greene	Peter & Elizabeth Keenan	Carol Livingston & Gary	William & Joanne Mitchell	Mary Pacifici
Larry Haugh	Martha & Bill Kelly	Golden	Modern Woodmen of	Priscilla Page
Bill & Lisanne Hegman	John & Pamela Kelly	Jill & Todd Lloyd	America No. 10244	John & Jeannie Panner
Carolyn & Cyril Heile	Roger & Emy Kendall	Robert & Susan Llyod	Madeleine Mongan & Kirby	Susan & William Parmenter
Craig D. Heindel & Judith	James & Donna Kendall	Carolyn E. Long	Scarborough	Ellen & James Parrish
Chaves	Sarah G. Kenney	Joanna & Norwood Long	Barbara A. Montgomery	David & Dolores Partridge
Kenneth Helms & Sara Cahan	Anne L. Kennison	Christopher & Ellen Lovell	Cecilia Ann Mooney	Steven & Becky Patch
Tammy & Walter Hetrick	Holly J. Killary	Robert & Elizabeth Low	Vivian Moore	Barbara & Henry Payson
Elizabeth A. Hindmarsh	Marsha Kincheloe & Peter	David & Margaret Luce	Sara & Michael Moran	Mitchell & Maureen Pearl
Anne & George Hodgson	Anthony	Raymond & Patricia Mainer	Francesca Moravcsik	Brooke Pearson
Tom Honigford & Sharon	Denise King	Cassandra Major	Laurene Mraz-Peterson	Bonnie & Brian Pease
O'Connor	David J. King	Ellen Maloney	Joachim Mueller	Walter & Jean Peck
John & Susan Hood	Warren & Barry King	Michael Manahan	Robert F. Mulcahy	Pamela Pedersen
Peter T. Hope	John King	Judi & Robert Manchester	Scott & Cheryl Mullins	Rose Pels
Donald & Mary Ann	Jonathan T. Klein	Larry Mandell & Marcie	Anna & Axel Mundigo	Neil & Carleen Pelsue
Horenstein	Chris & Gloria Krahn	Andres	Donald & Betty Munro	Jesse S. Pelton
Harvey & Ethel Horner	Charles & Jeanne Laclair	Barry Mansfield	Barbara Murphy	Sarah Penndorf
David & Janet Houston	Michael & Bonnie Ladd	Stephen R. Marx	James & Kathy Murray	Dale E. Percy & Jeannine
Mariot G. Huessy	Donald & Donna Lamb	Wendy W. McArdle	Stephen Neirman	Fortin
Lorraine L. Hughes	Linda & Irwin Langer	Matthew & Sabrina	John & Helen Newton	Thelma & Robert Perkins
Scott & Karen Hull	Dorothy E. Larsen	McDonough	Guy Jr. & Janet Nido	Gregory & Diane Peters
Margaret Jackson	Iris Lash	Carol McGinnis	Eileen R. Nikel	Richard & Marjorie Petit
William Jefferys	John & Patricia Lea	Nadia McIntosh	Craig F. Nolan	Rhaeto A. Pfister

2015 ANNUAL GIVING

Nancy Phillips & Blair Brooks
James & Crystal Pierce
Paul G. Pilcher
Richard H. Pittsley & Joyce
Solomon-Pittsley
Ann Plourde
Katherine M. Pond
Patricia & Terry Potter
William Powers
Nancy & Randall Pratt
Richard N. Prince
Regina Purtell
Robert Racusin
Deborah Ramsdell
Louise & David Ransom
Shanna Ratner
Kathleen & William
Reidinger
Dr. Ernest Reit
Barbara & David Rhoad
Hira & Solon Rhode
Mary & Thom Richards
Karen Rockow
Dale & Peg Rodgers

Gary & Anita Rogers
Thomas & Anne Roland
Carl & Joyce Roof
Lewis & Claudia Rose
Mildred Rose
Rufus & Nancy Royce
Barry Rufenacht & Janice
Brown
William & Barbara Ryan
Linda D. Rydman
David & Meri Ann
Saddlemire
Eric & Joanne Sailer
James & Ruth Santos
Peter L. Schenck
Ann Schofield
Ann C. Schroeder
Amy & Eric Schulz
Anya Schwartz
Craig Scribner
Charles F. Scribner
Joe & Jeanette Segale
Patricia D. Seivwright
Jack Sekelsky

Charles & Betty Shadel
Donald & Ellen Shephard
Jacob R. Sherman
Paul Shriver & Paulette
Shriver Staats
Marjorie Skott
Gunilla & Leif Smedman
Fred & Eleanor Smith
Nancy & George Smith
Rufus & Karen Smith
Richard & Sheryl Smith
Willard F. Smith
Katherine A. Snead
R. G. Solbert
Sallie Soule
John & Marilyn Sowles
Patricia & Thomas Spencer
Elizabeth Stabler
Gary Starr
Mark Stoler & Diane Gabriel
David & Ina Stolow
Betty Stone Ludwig
Richard Stott
Colonel Klaus & Jeanne

Stuecklen
Michael & Meike Sweatman
Steven & Jeanne Sysko
Bruce & Susan Talmadge
Peter Falion & Elizabeth
Tannenbaum
The Reservoir
Philip & Janet Thomas
David & Frances Thomas
Ruth Tisher
William L. Tobey
Dr. Robert Tortolani
Morris & Martha Tucker
Vicki Lynne Tucker
United Way of Chittenden
County
Frances Uptegrove
Drs. Michael & Marion Usher
Pamela M. Vacek
John & Jeannette Van
Blarcom
Barth & Elizabeth Vander Els
Peter & Julia Voll
Graham & Suzanne Wallis

Lynne Walther
Richard Walton & Kate Gauin
Tara L. Walzel
James & Barbara Wanner
Suzanne J. Ward
Susan & Timothy Wear
MJ Westervelt-Smith
Marjorie A. Westphal
James Whiting
Sue V. Wiles
Susan & Michael Willard
Lucille & James Williams
Mary & Ronald Wilmot
Ira Wilner & Eileen Deutsch
Alexander & Jerelyn Wilson
Ted & Jeanmarie Winokur
Charles & Pam Witherell
Mary Ann & Charles Wolf
Karl & Phyllis Wood
Alice L. Wright
Charles & Jean Wynn
Karen & Donald Yaggy
Anne Zopfi & Emery
Stephens

Thank you to our Partners:



IN-KIND AND AUCTION DONORS

3 Squares Café
The Alchemist
Altiplano
Barkeaters
The Bearded Frog
The Bennington Bookshop
The Blue Stone
Blueberry Hill Inn
Bolton Valley
Bond Auto Parts
Brandon Inn
Brendan Dunne
Bridge Street Hair
Burlington Bagel Bakery
Burlington Parks, Recreation
& Waterfront
Cabot Hosiery
Capital Kitchen
Catbird Studio
Chef Contos Kitchen & Store
City Market
Clarice Cutler
Cochran's Ski Area
Craft Beer Cellar
Craftsbury Outdoor Center
Cucina Antica Bistro
Dakin Farms
Dan Freeman's Leatherworks
Darkside
Dave Schmidt Photography
The Edge Sports & Fitness
Edgewise Elite Ski Service

Evolution PT & Yoga
Fairbanks Museum &
Planetarium
The Farmhouse Group
The Flying Pig Bookstore
Flynn Center for the
Performing Arts
Gardener's Supply
Gardenside Nurseries
George Russell
The Gift Garden
Glass Roots Art
Green Mountain Compost
Green Mountain Inn
Guitar Sam
Hannaford Supermarket &
Pharmacy
Hapy Mayer
The Hermitage Club
Honey Stinger
Horsford Gardens & Nursery
Hotel Vermont
The Inn on the Green
Jay Peak Resort
K.C.'s Bagel Café
Kent McFarland
Keurig Green Mountain
Killington Mountain Resort
King Arthur Flour
Kingdom Trails
Knapps
Rich & Sarah Knauff

Kristina Brines & Family
Lake Champlain Community
Sailing Center
Leunig's Bistro
Local Motion
Mad River Glen
Madison Brewery Company
Mann & Machine Inc
The Middlebury Inn
Mirabelles
Montgomery Adventures
Montshire Museum
Mount Snow Resort
The Mountain Goat
Mountain Meadows Lodge
Naomi Galimidi
National Life Foundation
Nick Prechel
Northeast Slopes
Northern Lights Rock & Ice
Northwest Technical Center
Norwich University
Kreitzberg Arena
Okemo Mountain Resort
The Old Stagecoach Inn
Outdoor Gear Exchange
The Paisley Hippo Sandwhich
Shop
Panache
Parkside Kitchen
Peter Riley Piano Works
Petra Cliffs

Picasso Pizzeria & Lounge
Prohibition Pig
The Quirky Pet
The Reservoir
Richmond Home Supply
Rikert Nordic Center
rk Miles Building Materials
Supplier
Roderick MacIver Arts
Rustic Roots
Sarducci's Restaurant & Bar
Shelburne Farms
Shelburne Health & Fitness
Shelburne Museum
Shelburne Vineyards
Ski & Snowboard Express
The Skinny Pancake
Sleepy Hollow Inn Ski & Bike
Center
Slope Style Ski & Ride
Small Dog Electronics
Smugglers' Notch Resort
Sneakers Bistro
Stockli Skis
Stowe Mountain Resort
Stowe Street Emporium
Sugarbush Resort
Sweet Simone's
Three Penny Taproom
Tire Warehouse
Toscano Café and Bistro
Trapp Family Lodge

Umiak
University Mall
The Vermont Country Store
Vermont Smoke & Cure
Vermont Teddy Bear Factory
The Village Chocolate Shop
Walt Disney World
The Wilder Farm Inn
WND & WVS
Woodstock Inn & Resort
The Woolen Mill Health Club
Yankee Tattoo
Yesterday Design/ Build
School
Zabby & Elf's Stone Soup

Special Thanks to all
of our **Auction Bidders**
who raised a collective
\$19,812 for VYCC!



VYCC

**VERMONT
YOUTH
CONSERVATION
CORPS**



**1949 EAST MAIN STREET
RICHMOND, VT 05477
WWW.VYCC.ORG**



**NON-PROFIT
ORGANIZATION
U.S. Postage
PAID
Permit No. 132
Burlington, VT**



**TEACHING YOUNG PEOPLE PERSONAL RESPONSIBILITY THROUGH MEANINGFUL
WORK THAT CONNECTS US TO THE LAND, COMMUNITY, AND ONE ANOTHER**